

MF3 Medium Pressure In-Line Filter

Featuring Hy-Pro G7 Dualglass Filter element technology



APPLICATIONS

- Hydrostatic charge circuit for Mobile Equipment
- Hy-Pro 5 Star CAT service center applications
- Return-line alternative to spin-on assemblies

FEATURES, BENEFITS, ADVANTAGES

DFE rated elements	G7 Dualglass and PE glass elements are DFE rated to assure performance even when exposed to the toughest hydraulic systems (See DFE literature for details)
Circumferential o-ring bowl seal	Circumferential seal on the bowl eliminates leaking. (No Drips)
Low housing pressure drop	Unique internal flow paths provide low resistance to flow. (Low pressure drop)
HF3 compatible	Port to port dimension, mounting pattern, and element design meet HF3 automotive specification. (Automotive standard)
Drain plug standard	Bowl with drain plug comes standard. (No price adder) SAE-4

PRODUCT SPECIFICATIONS

Pressure ratings	1200 psi (83 bar) max operating 3000 psi (206 bar) burst
Flow rate	50 gpm (187 lpm) max
Design safety factor	3:1
Fluid compatibility (ISO 2948)	Petroleum base fluid and specified Synthetics (contact factory)
Element collapse	250 psid (17 bar)
Housing materials	Head: Cast aluminum Bowl: Cast aluminum Bypass: Nylon Elements: Zinc or Tin coated Carbon steel
Filter media	G7 Dualglass or wire mesh
Differential pressure indicator trigger	45 psid (3.1 bar) standard
Bypass valve crack	50 psid (3.4 bar) standard
Weight (w/element)	MF34 length bowl 6.6 Lb (3 Kg) MF38 length bowl 8.8 Lb (4 Kg)
Temperature rating	Buna: -40°F(-40°C) ~ 225°F (107°C) Viton: -15°F(-26°C) ~ 275°F (135°C)



FILTRATION

HIGH PERFORMANCE FILTER ELEMENTS - THE HEART OF A FILTER

Dynamic Filter Efficiency (DFE) Testing

Revolutionary test methods assure that DFE rated elements perform true to rating even under demanding variable flow and vibration conditions. Today's industrial and mobile hydraulic circuits require elements that deliver specified cleanliness under ALL circumstances. Wire mesh supports the media to ensure against cyclical flow fatigue, temperature, and chemical resistance failures possible in filter elements with synthetic support mesh. Contact your distributor or Hy-Pro for more information and published articles on DFE testing.

Media Options

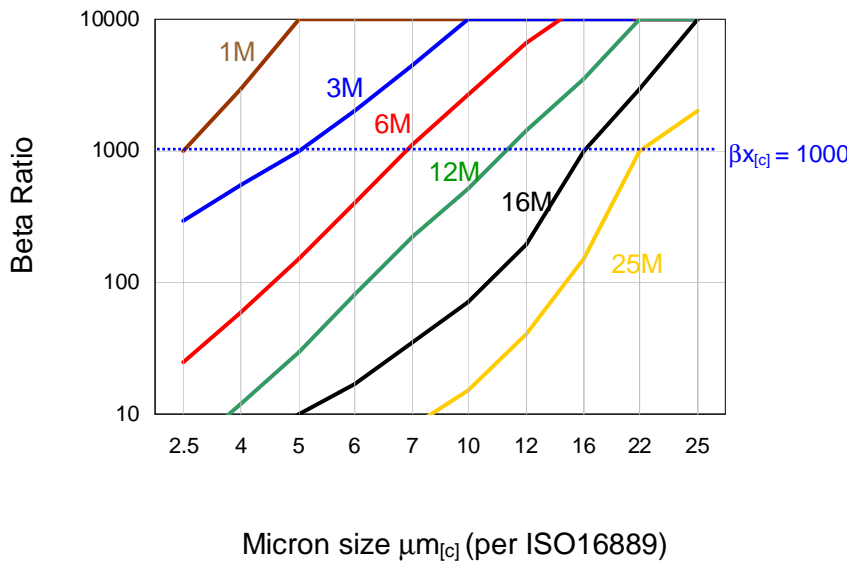
Through extensive testing we have developed media choices to handle any application. Options include G7 Dualglass, Dynafuzz (stainless fiber), and Wire mesh (stainless).

Fluid Compatibility

Petroleum based fluids, water glycol, polyol ester, phosphate ester, high water based fluids and many other synthetics. Contact us for seal material selection assistance.

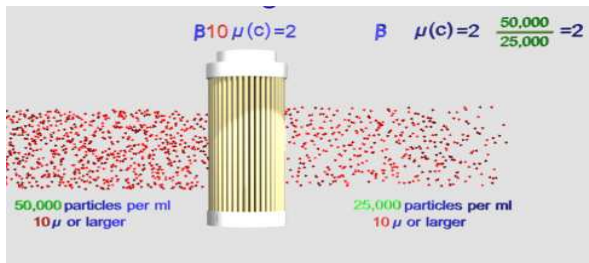
FILTER MEDIA SPECIFICATIONS

Glass Media Code Filtration Efficiency (Beta Ratio) vs Micron

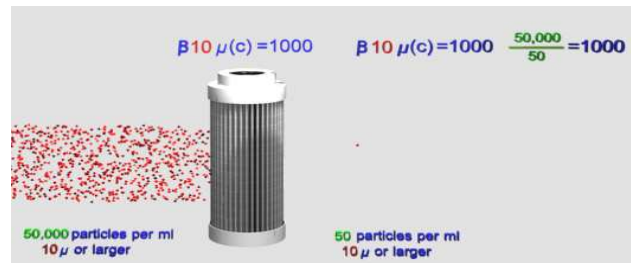


media code	media description
A	G7 Dualglass high performance media combined with water removal scrim. $\beta_{x[c]} = 1000$ ($\beta_x = 200$)
M	G7 Dualglass our latest generation of DFE rated, high performance glass media for all hydraulic & lubrication fluids. $\beta_{x[c]} = 1000$ ($\beta_x = 200$)
W	Stainless steel wire mesh media $\beta_{x[c]} = 2$ ($\beta_x = 2$) nominally rated

Typical cellulose media performance

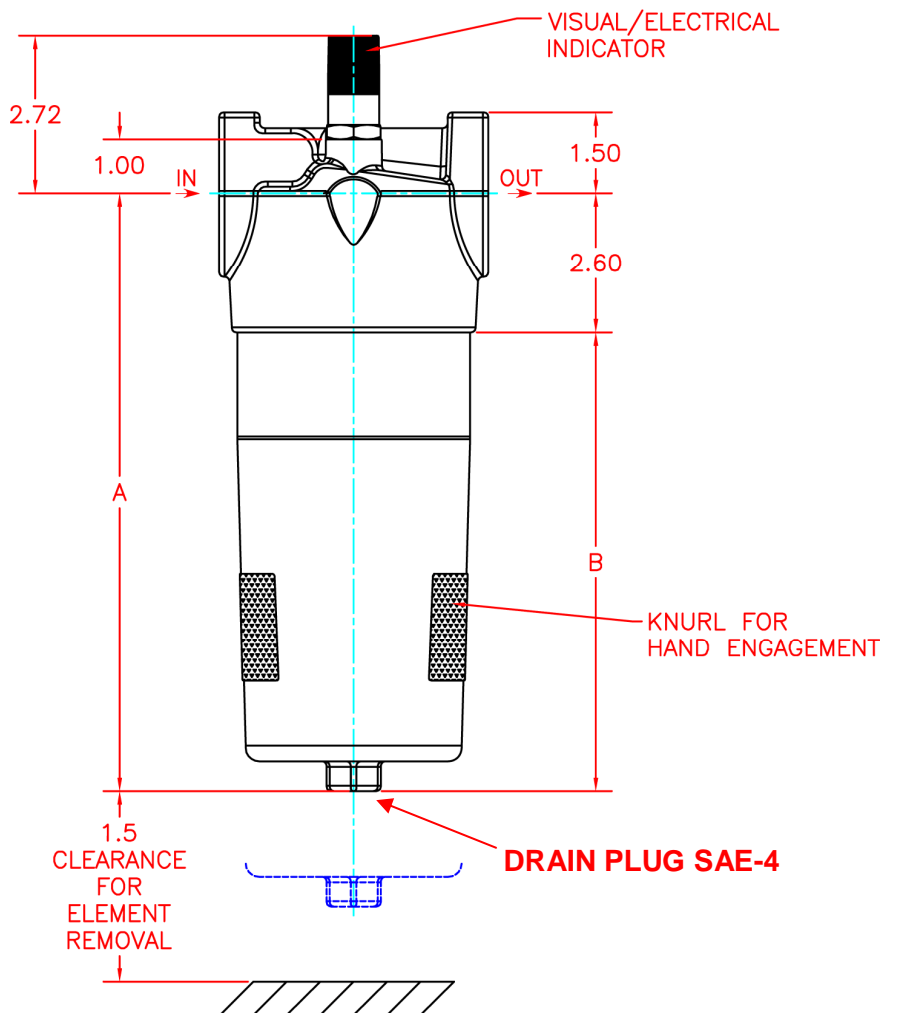
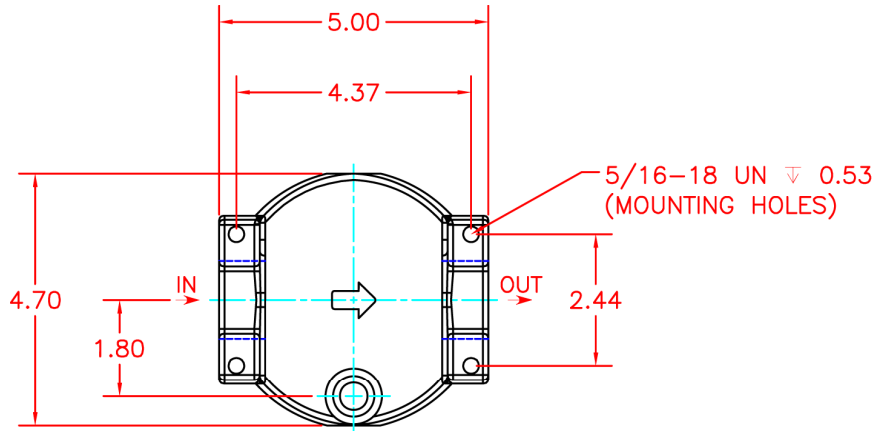


Hy-Pro G7 Dualglass media performance



INSTALLATION DRAWING

	Dim IN, Lb (mm, kg)	
	MF34	MF38
A	7.50" (190,5)	11.1" (281,9)
B	4.9" (124,5)	8.5" (215,9)
Weight	6.6 Lb (3 Kg)	8.8 Lb (4 Kg)



SPARE PARTS LIST

Seal Kits	P/N
Nitrile NBR	MF3SKB
Fluorocarbon	MF3SKV
Replacement Bowl Kits	
Single length code 4	MF3B4
Double length code 8	MF3B8
ΔP Indicators	
Visual, Buna seals	MF3IVB
Visual, Viton seals	MF3IVV
Electrical, Buna seals	MF3IEB
Electrical, Viton seals	MF3IEV
Drain Plugs	
SAE-4 plug, Buna	MF3DPB
SAE-4 plug, Viton	MF3DPV